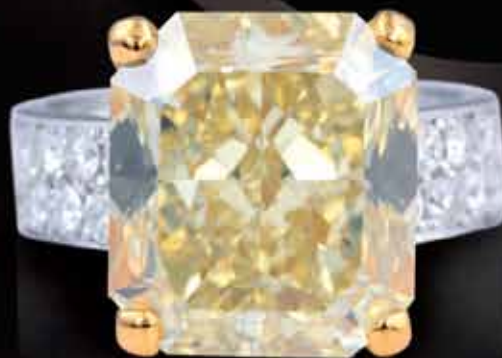


A|A|A|A
Asian Art Auction Alliance



Jewellery & Watches

At 2:30pm

Magnificent Collection From Japan

來自日本的瑰麗珍藏

RENAISSANCE HARBOUR VIEW HOTEL HONG KONG

Sunday 20th January 2013

Wine

At 4:00pm



Renaissance Harbour View Hotel Hong Kong

萬麗海景酒店

Mezzanine Floor, 1 Harbour Road, Wanchai, Hong Kong

香港灣仔港灣道1號閣樓

Sunday 20th January 2013
2013年1月20日 星期日

Jewellery & Watches Auction 2:30pm
珠寶及名錶拍賣 下午2時30分

Wine Auction 4:00pm
葡萄酒拍賣 下午4時正

Jewellery & Watches Preview

10:00am-8:00pm Saturday 19th January 2013
10:00am-2:00pm Sunday 20th January 2013

珠寶及名錶預展

2013年1月19日 星期六 早上10時正至晚上8時正
2013年1月20日 星期日 早上10時正至下午2時正



Some of wines offered in this sale are lying at overseas storage or French Château.
Please see storage, location and delivery of wines for more information.

Asian Art Auction Alliance Co., Ltd.

2/F, Shui On Centre, 6-8 Harbour Road, Wanchai, Hong Kong
Telephone +852-2824-8374 Fax +852-2824-8210 wine@aaa-alliance.hk
<http://aaa-alliance.hk> <http://wine.aaa-alliance.hk>

Wine AUCTION

20th January 2013 4:00pm



All offered in twelve-bottle original wooden case unless stated otherwise, the bottles in this collection have excellent appearance, good labels and levels. All purchases are taken as "AS IS" without representations of warranties of any kind. In no event shall you bring an action against A|A|A or seller in connection with any claim that the item is not as described in the catalogue or on the label. A mark of * indicated the availability of related image on A|A|A website <http://www.aaa-alliance.hk> for customer's reference. For more details, please feel free to contact us at wine@aaa-alliance.hk.

除分別列明的項目，拍賣會所有拍賣品均為十二瓶原裝木箱。此拍賣會中，拍品均有很好外觀，酒液水平位於頸部。所有拍品均以“現狀”出售，沒有表示任何形式的擔保。在任何情況下A|A|A或賣方都不接受任何投訴產品與目錄或在標籤上有差異的索賠。附有*標記之拍品圖像均上載至A|A|A網址<http://www.aaa-alliance.hk>以供參考。如希望索取其他資料，歡迎電郵至 wine@aaa-alliance.hk 與我們聯絡。

LOT	DESCRIPTION	SCORE - WA	VINTAGE	AOC/PRODUCER	CONT.	QUANTITY	CONDITION	BOTTLES	LABELS	CAPSULES	ESTIMATE(HKD)
DU TERTRE 杜特											
1	DU TERTRE 杜特	89pts	2007	MARGAUX 瑪歌	750	6	OWC				1,550 - 2,500
RAUZAN GASSIES 魯臣											
2	RAUZAN GASSIES 魯臣	83pts	1996	MARGAUX 瑪歌	750	24	OWC				9,300 - 14,000
3	RAUZAN GASSIES 魯臣	83pts	1996	MARGAUX 瑪歌	750	24	OWC				9,300 - 14,000
4	RAUZAN GASSIES 魯臣	83pts	1996	MARGAUX 瑪歌	750	24	OWC				9,300 - 14,000
5	RAUZAN GASSIES 魯臣	83pts	1996	MARGAUX 瑪歌	750	24	OWC				9,300 - 14,000
6	RAUZAN GASSIES 魯臣	83pts	1996	MARGAUX 瑪歌	750	24	OWC				9,300 - 14,000
BRANE CANTENAC 班 • 卡塔納											
7	BRANE CANTENAC 班 • 卡塔納	87pts	2004	MARGAUX 瑪歌	750	12	OWC				5,500 - 8,000
8	BRANE CANTENAC 班 • 卡塔納	87pts	2004	MARGAUX 瑪歌	750	12	OWC				5,500 - 8,000
9	BRANE CANTENAC 班 • 卡塔納	87pts	2004	MARGAUX 瑪歌	750	12	OWC				5,500 - 8,000
10	BRANE CANTENAC 班 • 卡塔納	87pts	2004	MARGAUX 瑪歌	750	12	OWC				5,500 - 8,000
11	BRANE CANTENAC 班 • 卡塔納	87pts	2004	MARGAUX 瑪歌	750	12	OWC				5,500 - 8,000
12	BRANE CANTENAC 班 • 卡塔納	86pts	2008	MARGAUX 瑪歌	750	12	OWC				5,200 - 7,500
13	BRANE CANTENAC 班 • 卡塔納	86pts	2008	MARGAUX 瑪歌	750	12	OWC				5,200 - 7,500
14	BRANE CANTENAC 班 • 卡塔納	86pts	2008	MARGAUX 瑪歌	750	12	OWC				5,200 - 7,500
15	BRANE CANTENAC 班 • 卡塔納	86pts	2008	MARGAUX 瑪歌	750	12	OWC				5,200 - 7,500
16	BRANE CANTENAC 班 • 卡塔納	86pts	2008	MARGAUX 瑪歌	750	12	OWC				5,200 - 7,500
GISCOURS 傑斯高											
17	GISCOURS 傑斯高	88pts	2006	MARGAUX 瑪歌	750	12	OWC				4,000 - 6,400
18	GISCOURS 傑斯高	83pts	1995	MARGAUX 瑪歌	750	12	OWC EX-CHATEAU				7,500 - 12,000
19	GISCOURS 傑斯高	83pts	1995	MARGAUX 瑪歌	750	12	OWC EX-CHATEAU				7,500 - 12,000
20	GISCOURS 傑斯高	83pts	1995	MARGAUX 瑪歌	750	12	OWC EX-CHATEAU				7,500 - 12,000
21	GISCOURS 傑斯高	83pts	1995	MARGAUX 瑪歌	750	12	OWC EX-CHATEAU				7,500 - 12,000
22	GISCOURS 傑斯高	83pts	1995	MARGAUX 瑪歌	750	12	OWC EX-CHATEAU				7,500 - 12,000
23	GISCOURS 傑斯高	85pts	1996	MARGAUX 瑪歌	750	12	OWC EX-CHATEAU				8,000 - 13,000
24	GISCOURS 傑斯高	85pts	1996	MARGAUX 瑪歌	750	12	OWC EX-CHATEAU				8,000 - 13,000
25	GISCOURS 傑斯高	85pts	1996	MARGAUX 瑪歌	750	12	OWC EX-CHATEAU				8,000 - 13,000
26	GISCOURS 傑斯高	85pts	1996	MARGAUX 瑪歌	750	12	OWC EX-CHATEAU				8,000 - 13,000
27	GISCOURS 傑斯高	85pts	1996	MARGAUX 瑪歌	750	12	OWC EX-CHATEAU				8,000 - 13,000
28	GISCOURS 傑斯高	90pts	2000	MARGAUX 瑪歌	750	12	OWC EX-CHATEAU				9,500 - 15,000

LOT	DESCRIPTION	SCORE - WA	VINTAGE	AOC/PRODUCER	CONT.	QUANTITY	CONDITION	BOTTLES	LABELS	CAPSULES	ESTIMATE(HKD)
GISCOURS 傑斯高											
29	GISCOURS 傑斯高	90pts	2000	MARGAUX 瑪歌	750	12	OWC EX-CHATEAU				9,500 - 15,000
30	GISCOURS 傑斯高	90pts	2000	MARGAUX 瑪歌	750	12	OWC EX-CHATEAU				9,500 - 15,000
31	GISCOURS 傑斯高	90pts	2000	MARGAUX 瑪歌	750	12	OWC EX-CHATEAU				9,500 - 15,000
32	GISCOURS 傑斯高	90pts	2000	MARGAUX 瑪歌	750	12	OWC EX-CHATEAU				9,500 - 15,000
33	GISCOURS IMPERIAL 傑斯高	90pts	2000	MARGAUX 瑪歌	6000	1	OWC EX-CHATEAU				5,600 - 8,000
MARGAUX 瑪歌											
34*	MARGAUX 瑪歌	98pts	2009	MARGAUX 瑪歌	750	3					16,000 - 22,000
35	MARGAUX 瑪歌	91pts	2002	MARGAUX 瑪歌	750	12	OWC				28,000 - 58,000
36	MARGAUX 瑪歌	91pts	2002	MARGAUX 瑪歌	750	12	OWC				28,000 - 58,000
37	MARGAUX 瑪歌	91pts	2002	MARGAUX 瑪歌	750	12	OWC				28,000 - 58,000
38	MARGAUX 瑪歌	91pts	2002	MARGAUX 瑪歌	750	12	OWC				28,000 - 58,000
39	MARGAUX 瑪歌	91pts	2002	MARGAUX 瑪歌	750	12	OWC				28,000 - 58,000
40	MARGAUX 瑪歌	91pts	1999	MARGAUX 瑪歌	750	12	OWC				28,000 - 58,000
41	MARGAUX 瑪歌	91pts	1999	MARGAUX 瑪歌	750	12	OWC				28,000 - 58,000
42	MARGAUX 瑪歌	91pts	1999	MARGAUX 瑪歌	750	12	OWC				28,000 - 58,000
43	MARGAUX 瑪歌	91pts	2009	MARGAUX 瑪歌	750	12	OWC				66,000 - 100,000
GRUAUD LAROSE 拉露斯											
44*	GRUAUD LAROSE 拉露斯	90pts	1989	SAINT JULIEN 聖朱利安	750	5					3,300 - 5,300
45*	GRUAUD LAROSE 拉露斯	90pts	1989	SAINT JULIEN 聖朱利安	750	6					4,000 - 6,400
46	GRUAUD LAROSE 拉露斯	89pts	2005	SAINT JULIEN 聖朱利安	750	12	OWC				4,400 - 7,000
LAGRANGE 拉漢斯											
47	LAGRANGE 拉漢斯	88pts	2008	SAINT JULIEN 聖朱利安	750	12	OWC				4,800 - 7,000
48	LAGRANGE 拉漢斯	88pts	2008	SAINT JULIEN 聖朱利安	750	12	OWC				4,800 - 7,000
49	LAGRANGE 拉漢斯	88pts	2008	SAINT JULIEN 聖朱利安	750	12	OWC				4,800 - 7,000
50	LAGRANGE 拉漢斯	88pts	2008	SAINT JULIEN 聖朱利安	750	12	OWC				4,800 - 7,000
51	LAGRANGE 拉漢斯	88pts	2008	SAINT JULIEN 聖朱利安	750	12	OWC				4,800 - 7,000
TALBOT 拓寶											
52	TALBOT 拓寶	93pts	2000	SAINT JULIEN 聖朱利安	750	12	OWC				6,400 - 10,000
53	TALBOT 拓寶	90pts	2008	SAINT JULIEN 聖朱利安	750	12	OWC				4,400 - 7,000
SUDUIRAUT 緒帝羅莊園											
54	SUDUIRAUT 緒帝羅莊園	91pts	1997	SAUTERNES 蘇特恩	750	24	OWC				8,800 - 12,000
55	SUDUIRAUT 緒帝羅莊園	91pts	1997	SAUTERNES 蘇特恩	750	24	OWC				8,800 - 12,000
56	SUDUIRAUT 緒帝羅莊園	91pts	1997	SAUTERNES 蘇特恩	750	24	OWC				8,800 - 12,000
57	SUDUIRAUT 緒帝羅莊園	91pts	1997	SAUTERNES 蘇特恩	750	24	OWC				8,800 - 12,000
58	SUDUIRAUT 緒帝羅莊園	91pts	1997	SAUTERNES 蘇特恩	750	24	OWC				8,800 - 12,000

LOT	DESCRIPTION	SCORE - WA	VINTAGE	AOC/PRODUCER	CONT.	QUANTITY	CONDITION	BOTTLES	LABELS	CAPSULES	ESTIMATE(HKD)
LA LAGUNE 拉拉岡莊園											
59	LALAGUNE 拉拉岡莊園	93pts	2008	HAUT MEDOC 上梅多克	750	12	OWC				4,900 - 7,800
FONREAUD 楓和酒莊											
60	FONREAUD 楓和酒莊	83pts	1996	LISTRAC MEDOC 斯塔基梅多克	750	12	OWC				2,200 - 3,500
61	FONREAUD 楓和酒莊	83pts	1996	LISTRAC MEDOC 斯塔基梅多克	750	12	OWC				2,200 - 3,500
62	FONREAUD 楓和酒莊	83pts	1996	LISTRAC MEDOC 斯塔基梅多克	750	12	OWC				2,200 - 3,500
LARRIVET HAUT BRION ROUGE 拉河瓦奧比昂堡											
63*	LARRIVET HAUT BRION ROUGE 拉河瓦奧比昂堡	87pts	2009	PESSAC LEOGNAN 貝薩克 利貝儂	750	8					1,500 - 2,400
CLEMENTIN DU PAPE CLEMENT 黑教皇堡副牌											
64	CLEMENTIN DU PAPE CLEMENT 黑教皇堡副牌	90pts	2009	PESSAC LEOGNAN 貝薩克 利貝儂	750	6	OWC				1,600 - 2,500
LARRIVET HAUT BRION ROUGE 拉河瓦奧比昂堡											
65	LARRIVET HAUT BRION ROUGE 拉河瓦奧比昂堡	87pts	2009	PESSAC LEOGNAN 貝薩克 利貝儂	750	12	OWC				2,200 - 3,500
66	LARRIVET HAUT BRION ROUGE 拉河瓦奧比昂堡	87pts	2009	PESSAC LEOGNAN 貝薩克 利貝儂	750	12	OWC				2,200 - 3,500
LE CLARENCE HAUT BRION 奧比昂副牌											
67	LE CLARENCE HAUT BRION 奧比昂副牌	90pts	2009	PESSAC LEOGNAN 貝薩克 利貝儂	750	4	OWC				2,600 - 4,000
CARBONNIEUX 卡本諾堡											
68	CARBONNIEUX 卡本諾堡	87pts	1998	PESSAC LEOGNAN 貝薩克 利貝儂	750	12	OWC				3,400 - 5,500
LAVILLE HAUT BRION 紅顏容拉維酒莊											
69*	LAVILLE HAUT BRION 紅顏容拉維酒莊	93pts	2008	PESSAC LEOGNAN 貝薩克 利貝儂	750	6					9,000 - 15,000
PAPE CLEMENT 黑教皇堡											
70	PAPE CLEMENT 黑教皇堡	89pts	2008	PESSAC LEOGNAN 貝薩克 利貝儂	750	6	OWC				3,000 - 4,800
71	PAPE CLEMENT 黑教皇堡	93pts	1988	PESSAC LEOGNAN 貝薩克 利貝儂	750	24	OWC EX-CHATEAU				28,800 - 40,000
72	PAPE CLEMENT 黑教皇堡	93pts	1988	PESSAC LEOGNAN 貝薩克 利貝儂	750	24	OWC EX-CHATEAU				28,800 - 40,000
73	PAPE CLEMENT 黑教皇堡	93pts	1988	PESSAC LEOGNAN 貝薩克 利貝儂	750	24	OWC EX-CHATEAU				28,800 - 40,000
74	PAPE CLEMENT 黑教皇堡	93pts	1988	PESSAC LEOGNAN 貝薩克 利貝儂	750	24	OWC EX-CHATEAU				28,800 - 40,000
75	PAPE CLEMENT 黑教皇堡	93pts	1988	PESSAC LEOGNAN 貝薩克 利貝儂	750	24	OWC EX-CHATEAU				28,800 - 40,000
76	PAPE CLEMENT DOUBLE MAGNUM 黑教皇堡	93pts	1988	PESSAC LEOGNAN 貝薩克 利貝儂	3000	2	OWC EX-CHATEAU				10,500 - 15,000
77	PAPE CLEMENT IMPERIAL 黑教皇堡	93pts	1988	PESSAC LEOGNAN 貝薩克 利貝儂	6000	1	OWC EX-CHATEAU				10,500 - 15,000
78	PAPE CLEMENT 黑教皇堡	92pts	1990	PESSAC LEOGNAN 貝薩克 利貝儂	750	12	OWC EX-CHATEAU				22,000 - 38,000
79	PAPE CLEMENT 黑教皇堡	88pts	1995	PESSAC LEOGNAN 貝薩克 利貝儂	750	12	OWC EX-CHATEAU				12,000 - 20,000
80	PAPE CLEMENT JEROBOAM 黑教皇堡	88pts	1995	PESSAC LEOGNAN 貝薩克 利貝儂	5000	1	OWC EX-CHATEAU				7,000 - 12,000
81	PAPE CLEMENT 黑教皇堡	88pts	1996	PESSAC LEOGNAN 貝薩克 利貝儂	750	12	OWC EX-CHATEAU				14,400 - 22,000
82	PAPE CLEMENT IMPERIAL 黑教皇堡	88pts	1996	PESSAC LEOGNAN 貝薩克 利貝儂	6000	1	OWC EX-CHATEAU				9,500 - 13,500
83	PAPE CLEMENT DOUBLE MAGNUM 黑教皇堡	92pts	2000	PESSAC LEOGNAN 貝薩克 利貝儂	3000	1	OWC EX-CHATEAU				7,500 - 11,000
D'AIGUIHE 戴基龍酒堡											
84	D'AIGUIHE 戴基龍酒堡	90-92pts	2009	COTES DE CASTILLON 優等卡斯蒂永	750	12	OWC				2,700 - 4,300
LA CONSEILLANTE 拉康斯雍											
85*	LA CONSEILLANTE 拉康斯雍	88pts	2007	POMEROL 帕瑪魯	750	8					3,300 - 5,000

LOT	DESCRIPTION	SCORE - WA	VINTAGE	AOC/PRODUCER	CONT.	QUANTITY	CONDITION	BOTTLES	LABELS	CAPSULES	ESTIMATE(HKD)
MANOIR DE GAY 敏洛德凱堡											
86	MANOIR DE GAY 敏洛德凱堡	86pts	2009	POMEROL 帕瑪魯	750	12	OWC				3,500 - 5,600
87	MANOIR DE GAY 敏洛德凱堡	86pts	2009	POMEROL 帕瑪魯	750	12	OWC				3,500 - 5,600
88	MANOIR DE GAY 敏洛德凱堡	86pts	2009	POMEROL 帕瑪魯	750	12	OWC				3,500 - 5,600
89	MANOIR DE GAY 敏洛德凱堡	83pts	2008	POMEROL 帕瑪魯	750	12	OWC				4,300 - 6,800
LA CONSEILLANTE 拉康斯雍											
90	LA CONSEILLANTE 拉康斯雍	88pts	2007	POMEROL 帕瑪魯	750	12	OWC				5,000 - 8,000
LA GROIX DE GAY 爾索德凱堡											
91	LA GROIX DE GAY 爾索德凱堡	87pts	1995	POMEROL 帕瑪魯	750	12	OWC				6,400 - 10,000
PETIT VILLAGE 小村莊莊園											
92	PETIT VILLAGE 小村莊莊園	89pts	1998	POMEROL 帕瑪魯	750	12	OWC				6,800 - 10,000
TROTANOY 卓龍											
93*	TROTANOY 卓龍	93pts	2005	POMEROL 帕瑪魯	750	6					8,500 - 13,500
LAFLEUR 拉弗爾堡(花堡)											
94	LAFLEUR 拉弗爾堡(花堡)	87-88pts	2002	POMEROL 帕瑪魯	750	12	OWC				24,000 - 38,000
LE PETIT CHEVAL 白馬副牌											
95*	LE PETIT CHEVAL 白馬副牌	89pts	2008	SAINT EMILION 聖美愛倫	750	2					1,400 - 2,200
CLOS DE SARPE 薩爾普酒莊											
96	CLOS DE SARPE 薩爾普酒莊	83pts	2003	SAINT EMILION 聖美愛倫	750	12	OWC				3,100 - 5,000
LA DOMINIQUE 多明尼克酒堡											
97	LA DOMINIQUE 多明尼克酒堡	90pts	2008	SAINT EMILION 聖美愛倫	750	12	OWC				3,200 - 5,000
PAVIE 柏非											
98*	PAVIE 柏非	94pts	2009	SAINT EMILION 聖美愛倫	750	2					3,300 - 5,300
CLOS DE L'ORATOIRE 羅哈托爾											
99	CLOS DE L'ORATOIRE 羅哈托爾	89-91pts	2008	SAINT EMILION 聖美愛倫	750	12	OWC				3,400 - 5,500
CANON LA GAFFELIERE 卡農拉格斐酒堡											
100	CANON LA GAFFELIERE 卡農拉格斐酒堡	90pts	2007	SAINT EMILION 聖美愛倫	750	12	OWC				4,800 - 7,700
LA DOMINIQUE 多明尼克酒堡											
101	LA DOMINIQUE 多明尼克酒堡	91pts	2000	SAINT EMILION 聖美愛倫	750	12	OWC				4,800 - 7,700
PAVIE 柏非											
102*	PAVIE 柏非	94pts	2009	SAINT EMILION 聖美愛倫	750	3					4,900 - 7,900
PAVIE DECESSE 柏非德凱斯莊園											
103	PAVIE DECESSE 柏非德凱斯莊園	88pts	2007	SAINT EMILION 聖美愛倫	750	12	OWC				7,200 - 12,000
LE PETIT CHEVAL 白馬副牌											
104	LE PETIT CHEVAL 白馬副牌	WS:88pts	2000	SAINT EMILION 聖美愛倫	750	12	OWC				13,500 - 21,500
TROPLONG MONDOT 特洛朗·蒙度堡											
105	TROPLONG MONDOT MAGNUM 特洛朗 蒙度堡	99pts	2005	SAINT EMILION 聖美愛倫	1500	6	OWC				15,800 - 25,000

LOT	DESCRIPTION	SCORE - WA	VINTAGE	AOC/PRODUCER	CONT.	QUANTITY	CONDITION	BOTTLES	LABELS	CAPSULES	ESTIMATE(HKD)
AUSONE 歐頌古堡											
106*	AUSONE 歐頌古堡	94pts	2006	SAINT EMILION 聖美愛倫	750	6					23,000 - 37,000
LAURENT PERRIER GRAND SIECLE 羅蘭百悅											
107*	LAURENT PERRIER GRAND SIECLE 羅蘭百悅	92pts	1990	CHAMPAGNE 香檳	750	2					1,800 - 2,800
CLARENDON HILLS ASTRALIS 歐頌古堡											
108	CLARENDON HILLS ASTRALIS 克萊爾頓山 星光園	95pts	2005	MCLAREN VALE, AUSTRALIA 麥克拉倫穀, 澳洲	750	6	OWC				6,000 - 9,600
BIN 707 CABERNET SAUVIGNON BIN 707 赤霞珠											
109*	BIN 707 CABERNET SAUVIGNON BIN 707 赤霞珠	93pts	1998	PENFOLDS 奔富	750	1					1,100 - 1,700
110*	BIN 707 CABERNET SAUVIGNON BIN 707 赤霞珠	93pts	1999	PENFOLDS 奔富	750	1					1,300 - 2,000
SASSICAIA 西施嘉雅											
111*	SASSICAIA 西施嘉雅	93pts	2003	TENUTA SAN GUIDO	750	3					3,000 - 4,800
VOSNE ROMANEE 1ER DUVAULT BLOCHET 維森羅曼尼•都賀爾波查											
112	VOSNE ROMANEE 1ER DUVAULT BLOCHET 維森羅曼尼 都賀爾波查	-	2009	DRC DRC	750	1					2,700 - 5,000
CORTON 科爾登											
113	CORTON 科爾登	93pts	2009	DRC DRC	750	1					3,500 - 7,000
ECHEZEAUX 依瑟索											
114	ECHEZEAUX 依瑟索	92pts	2009	DRC DRC	750	1					5,500 - 10,000
115	ECHEZEAUX 依瑟索	92pts	2009	DRC DRC	750	1					5,500 - 10,000
RICHEBOURG 李其堡											
116	RICHEBOURG 李其堡	95pts	2009	DRC DRC	750	1					8,000 - 13,000
ROMANEE SAINT VIVENT 羅曼尼聖維望											
117	ROMANEE SAINT VIVENT 羅曼尼聖維望	95pts	2009	DRC DRC	750	1					8,500 - 14,000
LA TACHE 塔希											
118	LA TACHE 塔希	96pts	2009	DRC DRC	750	1					10,000 - 15,000
119	LA TACHE 塔希	96pts	2009	DRC DRC	750	1					10,000 - 15,000
120*	LA TACHE 塔希	91pts	1985	DRC DRC	750	1		3.0cm			12,000 - 18,000
GRANDS ECHEZEAUX 大依瑟索											
121*	GRANDS ECHEZEAUX 大依瑟索	90pts	1970	DRC DRC	750	2					14,000 - 21,000
ECHEZEAUX 依瑟索											
122*	ECHEZEAUX 依瑟索	92pts	1999	DRC DRC	750	1					6,000 - 9,600
123	ECHEZEAUX 依瑟索	92pts	2006	DRC DRC	750	1					4,200 - 6,500
LA TACHE 塔希											
124*	LA TACHE 塔希	94pts	1978	DRC DRC	750	1		4.4cm	e.t.		28,000 - 44,000
LA DAME DE MONTROSE 玫瑰莊園副牌											
125	LA DAME DE MONTROSE 玫瑰莊園副牌	87pts	2004	SAINT ESTEPHE 聖特夫塔夫	750	12	OWC				3,800 - 5,000
126	LA DAME DE MONTROSE 玫瑰莊園副牌	87pts	2004	SAINT ESTEPHE 聖特夫塔夫	750	12	OWC				3,800 - 5,000
127	LA DAME DE MONTROSE 玫瑰莊園副牌	87pts	2004	SAINT ESTEPHE 聖特夫塔夫	750	12	OWC				3,800 - 5,000
128	LA DAME DE MONTROSE 玫瑰莊園副牌	87pts	2004	SAINT ESTEPHE 聖特夫塔夫	750	12	OWC				3,800 - 5,000

LOT	DESCRIPTION	SCORE - WA	VINTAGE	AOC/PRODUCER	CONT.	QUANTITY	CONDITION	BOTTLES	LABELS	CAPSULES	ESTIMATE(HKD)
COS D'ESTOURNEL 埃斯圖耐爾											
129	LA DAME DE MONTROSE 玫瑰莊園副牌	87pts	2004	SAINT ESTEPHE 聖特夫塔夫	750	12	OWC				3,800 - 5,000
130	LA DAME DE MONTROSE 玫瑰莊園副牌	88pts	2006	SAINT ESTEPHE 聖特夫塔夫	750	12	OWC				3,800 - 5,000
131	LA DAME DE MONTROSE 玫瑰莊園副牌	88pts	2006	SAINT ESTEPHE 聖特夫塔夫	750	12	OWC				3,800 - 5,000
132	LA DAME DE MONTROSE 玫瑰莊園副牌	88pts	2006	SAINT ESTEPHE 聖特夫塔夫	750	12	OWC				3,800 - 5,000
133	LA DAME DE MONTROSE 玫瑰莊園副牌	88pts	2006	SAINT ESTEPHE 聖特夫塔夫	750	12	OWC				3,800 - 5,000
134	LA DAME DE MONTROSE 玫瑰莊園副牌	88pts	2006	SAINT ESTEPHE 聖特夫塔夫	750	12	OWC				3,800 - 5,000
LAFONT ROCHET 拉封侯爵											
135	LAFONT ROCHET 拉封侯爵	85pts	1995	SAINT ESTEPHE 聖特夫塔夫	750	24	OWC EX- CHATEAU				16,000 - 23,000
136	LAFONT ROCHET 拉封侯爵	85pts	1995	SAINT ESTEPHE 聖特夫塔夫	750	36	OWC EX- CHATEAU				24,000 - 34,000
137	LAFONT ROCHET 拉封侯爵	87pts	1996	SAINT ESTEPHE 聖特夫塔夫	750	24	OWC EX- CHATEAU				14,000 - 22,000
138	LAFONT ROCHET 拉封侯爵	87pts	1996	SAINT ESTEPHE 聖特夫塔夫	750	36	OWC EX- CHATEAU				21,000 - 32,000
139	LAFONT ROCHET 拉封侯爵	89pts	2000	SAINT ESTEPHE 聖特夫塔夫	750	24	OWC EX- CHATEAU				16,000 - 23,000
140	LAFONT ROCHET 拉封侯爵	89pts	2000	SAINT ESTEPHE 聖特夫塔夫	750	36	OWC EX- CHATEAU				24,000 - 34,000
141	LAFONT ROCHET 拉封侯爵	89pts	2000	SAINT ESTEPHE 聖特夫塔夫	750	24	OWC EX- CHATEAU				16,000 - 23,000
142	LAFONT ROCHET 拉封侯爵	89pts	2000	SAINT ESTEPHE 聖特夫塔夫	750	36	OWC EX- CHATEAU				24,000 - 34,000
143	LAFONT ROCHET MAGNUM 拉封侯爵	87pts	1988	SAINT ESTEPHE 聖特夫塔夫	1500	6	OWC EX- CHATEAU				13,800 - 22,000
144	LAFONT ROCHET DOUBLE MAGNUM 拉封侯爵	90pts	2010	SAINT ESTEPHE 聖特夫塔夫	3000	3	OWC1×3				6,000 - 9,000
145	LAFONT ROCHET DOUBLE MAGNUM 拉封侯爵	90pts	2010	SAINT ESTEPHE 聖特夫塔夫	3000	3	OWC1×3				6,000 - 9,000
146	LAFONT ROCHET DOUBLE MAGNUM 拉封侯爵	90pts	2010	SAINT ESTEPHE 聖特夫塔夫	3000	3	OWC1×3				6,000 - 9,000
147	LAFONT ROCHET DOUBLE MAGNUM 拉封侯爵	90pts	2010	SAINT ESTEPHE 聖特夫塔夫	3000	3	OWC1×3				6,000 - 9,000
148	LAFONT ROCHET JEROBOAM 拉封侯爵	90pts	2010	SAINT ESTEPHE 聖特夫塔夫	5000	3	OWC1×3				9,500 - 12,000
149	LAFONT ROCHET JEROBOAM 拉封侯爵	90pts	2010	SAINT ESTEPHE 聖特夫塔夫	5000	3	OWC1×3				9,500 - 12,000
150	LAFONT ROCHET IMPERIAL 拉封侯爵	90pts	2010	SAINT ESTEPHE 聖特夫塔夫	6000	3	OWC1×3				11,500 - 14,000
151	LAFONT ROCHET IMPERIAL 拉封侯爵	90pts	2010	SAINT ESTEPHE 聖特夫塔夫	6000	3	OWC1×3				11,500 - 14,000
CALON SEGUR 凱龍世家											
152	CALON SEGUR 凱龍世家	90pts	1996	SAINT ESTEPHE 聖特夫塔夫	750	12	OWC				6,600 - 10,000
153	CALON SEGUR 凱龍世家	90pts	1996	SAINT ESTEPHE 聖特夫塔夫	750	12	OWC				6,600 - 10,000
154	CALON SEGUR 凱龍世家	90pts	1996	SAINT ESTEPHE 聖特夫塔夫	750	12	OWC				6,600 - 10,000
155	CALON SEGUR 凱龍世家	90pts	1996	SAINT ESTEPHE 聖特夫塔夫	750	10					5,500 - 10,000
COS D'ESTOURNEL 埃斯圖耐爾											
156	COS D'ESTOURNEL DOUBLE MAGNUM 埃斯圖耐爾	92pts	2000	SAINT ESTEPHE 聖特夫塔夫	3000	3	OWC EX- CHATEAU				28,500 - 40,000
157	COS D'ESTOURNEL DOUBLE MAGNUM 埃斯圖耐爾	92pts	2000	SAINT ESTEPHE 聖特夫塔夫	3000	3	OWC EX- CHATEAU				28,500 - 40,000
158	COS D'ESTOURNEL DOUBLE MAGNUM 埃斯圖耐爾	92pts	2000	SAINT ESTEPHE 聖特夫塔夫	3000	3	OWC EX- CHATEAU				28,500 - 40,000
159	COS D'ESTOURNEL DOUBLE MAGNUM 埃斯圖耐爾	92pts	2000	SAINT ESTEPHE 聖特夫塔夫	3000	3	OWC EX- CHATEAU				28,500 - 40,000
160	COS D'ESTOURNEL IMPERIAL 埃斯圖耐爾	92pts	2000	SAINT ESTEPHE 聖特夫塔夫	6000	2	OWC EX- CHATEAU				38,000 - 50,000
161	COS D'ESTOURNEL IMPERIAL 埃斯圖耐爾	92pts	2000	SAINT ESTEPHE 聖特夫塔夫	6000	2	OWC EX- CHATEAU				38,000 - 50,000

LOT	DESCRIPTION	SCORE - WA	VINTAGE	AOC/PRODUCER	CONT.	QUANTITY	CONDITION	BOTTLES	LABELS	CAPSULES	ESTIMATE(HKD)
COS D'ESTOURNEL 埃斯圖耐爾											
162	COS D'ESTOURNEL IMPERIAL 埃斯圖耐爾	92pts	2000	SAINT ESTEPHE 聖特夫塔夫	6000	2	OWC EX-CHATEAU				38,000 - 50,000
163	COS D'ESTOURNEL BALTHAZAR 埃斯圖耐爾	91pts	1995	SAINT ESTEPHE 聖特夫塔夫	12000	1	OWC EX-CHATEAU				48,500 - 70,000
164	COS D'ESTOURNEL BALTHAZAR 埃斯圖耐爾	92pts	1996	SAINT ESTEPHE 聖特夫塔夫	12000	1	OWC EX-CHATEAU				43,500 - 65,000
165	COS D'ESTOURNEL BALTHAZAR 埃斯圖耐爾	92pts	2000	SAINT ESTEPHE 聖特夫塔夫	12000	1	OWC EX-CHATEAU				38,000 - 55,000
166	COS D'ESTOURNEL BALTHAZAR 埃斯圖耐爾	91pts	1995	SAINT ESTEPHE 聖特夫塔夫	12000	1	OWC EX-CHATEAU				48,500 - 70,000
167	COS D'ESTOURNEL BALTHAZAR 埃斯圖耐爾	92pts	1996	SAINT ESTEPHE 聖特夫塔夫	12000	1	OWC EX-CHATEAU				43,500 - 65,000
168	COS D'ESTOURNEL BALTHAZAR 埃斯圖耐爾	92pts	2000	SAINT ESTEPHE 聖特夫塔夫	12000	1	OWC EX-CHATEAU				38,000 - 55,000
169	COS D'ESTOURNEL NABUCHODONOSOR 埃斯圖耐爾	92pts	1996	SAINT ESTEPHE 聖特夫塔夫	15000	1	OWC EX-CHATEAU				55,000 - 80,000
170	COS D'ESTOURNEL NABUCHODONOSOR 埃斯圖耐爾	92pts	2000	SAINT ESTEPHE 聖特夫塔夫	15000	1	OWC EX-CHATEAU				48,000 - 75,000
171	COS D'ESTOURNEL MELCHIOR 埃斯圖耐爾	92pts	1996	SAINT ESTEPHE 聖特夫塔夫	18000	1	OWC EX-CHATEAU				65,000 - 90,000
172	COS D'ESTOURNEL MELCHIOR 埃斯圖耐爾	92pts	2000	SAINT ESTEPHE 聖特夫塔夫	18000	1	OWC EX-CHATEAU				58,000 - 85,000
LYNCH BAGES 靚次伯											
173*	LYNCH BAGES 靚次伯	90pts	2003	PAUILLAC 波雅克	750	2					1,500 - 2,500
PETIT MOUTON 木桐副牌											
174*	PETIT MOUTON 木桐副牌	92pts	2009	PAUILLAC 波雅克	750	3					1,800 - 2,400
LES FORTS DE LATOUR 拉圖副牌											
175*	LES FORTS DE LATOUR 拉圖副牌	90pts	2008	PAUILLAC 波雅克	750	2					2,100 - 3,400
GRAND PUY LACOSTE 裴杜卡斯											
176	GRAND PUY LACOSTE 裴杜卡斯	88pts	2008	PAUILLAC 波雅克	750	12	OWC				2,800 - 4,500
177	GRAND PUY LACOSTE 裴杜卡斯	88pts	2008	PAUILLAC 波雅克	750	12	OWC				2,800 - 4,500
LYNCH BAGES 靚次伯											
178*	LYNCH BAGES 靚次伯	88pts	2007	PAUILLAC 波雅克	750	6					3,000 - 4,800
MOUTON ROTHSCHILD 木桐											
179*	MOUTON ROTHSCHILD 木桐	92pts	2002	PAUILLAC 波雅克	750	2					4,000 - 6,400
LATOUR 拉圖											
180*	LATOUR 拉圖	91pts	1989	PAUILLAC 波雅克	750	2					4,200 - 6,700
LAFITE ROTHSCHILD 拉菲											
181*	LAFITE ROTHSCHILD 拉菲	94pts	1990	PAUILLAC 波雅克	750	1					4,500 - 7,000
LATOUR 拉圖											
182*	LATOUR 拉圖	90pts	1986	PAUILLAC 波雅克	750	2					4,500 - 7,200
LYNCH BAGES 靚次伯											
183*	LYNCH BAGES 靚次伯	91pts	1989	PAUILLAC 波雅克	750	2					4,500 - 7,000
MOUTON ROTHSCHILD 木桐											
184*	MOUTON ROTHSCHILD 木桐	92pts	1996	PAUILLAC 波雅克	750	2					5,000 - 8,000
DUHART MILON 都夏美隆 (拉菲)											
185	DUHART MILON 都夏美隆 (拉菲)	87pts	2007	PAUILLAC 波雅克	750	12	OWC				6,500 - 10,000

LOT	DESCRIPTION	SCORE - WA	VINTAGE	AOC/PRODUCER	CONT.	QUANTITY	CONDITION	BOTTLES	LABELS	CAPSULES	ESTIMATE(HKD)
LYNCH MOUSSAS 靚茨摩酒莊											
186	LYNCH MOUSSAS 靚茨摩酒莊	84pts	1995	PAUILLAC 波雅克	750	24	OWC				7,300 - 11,000
187	LYNCH MOUSSAS 靚茨摩酒莊	84pts	1995	PAUILLAC 波雅克	750	24	OWC				7,300 - 11,000
188	LYNCH MOUSSAS 靚茨摩酒莊	84pts	1995	PAUILLAC 波雅克	750	24	OWC				7,300 - 11,000
189	LYNCH MOUSSAS 靚茨摩酒莊	84pts	1995	PAUILLAC 波雅克	750	24	OWC				7,300 - 11,000
190	LYNCH MOUSSAS 靚茨摩酒莊	84pts	1995	PAUILLAC 波雅克	750	24	OWC				7,300 - 11,000
LAFITE ROTHSCHILD 拉菲											
191*	LAFITE ROTHSCHILD 拉菲	92pts	2002	PAUILLAC 波雅克	750	2					7,800 - 12,500
192*	LAFITE ROTHSCHILD 拉菲	93pts	1986	PAUILLAC 波雅克	750	1					8,000 - 13,000
LES FORTS DE LATOUR 拉圖副牌											
193	LES FORTS DE LATOUR 拉圖副牌	89pts	2006	PAUILLAC 波雅克	750	12	OWC				15,500 - 25,000
194	LES FORTS DE LATOUR 拉圖副牌	89pts	2006	PAUILLAC 波雅克	750	12	OWC				15,500 - 25,000
MOUTON ROTHSCHILD 木桐											
195*	MOUTON ROTHSCHILD 木桐	99pts	2009	PAUILLAC 波雅克	750	3					16,000 - 22,000
PICHON BARON 碧尚男爵											
196	PICHON BARON 碧尚男爵	89pts	1995	PAUILLAC 波雅克	750	12	OWC EX- CHATEAU				18,000 - 30,000
197	PICHON BARON 碧尚男爵	89pts	1995	PAUILLAC 波雅克	750	12	OWC EX- CHATEAU				18,000 - 30,000
198	PICHON BARON 碧尚男爵	89pts	1995	PAUILLAC 波雅克	750	12	OWC EX- CHATEAU				18,000 - 30,000
199	PICHON BARON JEROBOAM 碧尚男爵	91pts	1988	PAUILLAC 波雅克	5000	1	OWC EX- CHATEAU				18,000 - 30,000
PICHON BARON 碧尚男爵											
200	PICHON BARON 碧尚男爵	90pts	1996	PAUILLAC 波雅克	750	12	OWC EX- CHATEAU				14,000 - 22,000
201	PICHON BARON 碧尚男爵	90pts	1996	PAUILLAC 波雅克	750	12	OWC EX- CHATEAU				14,000 - 22,000
202	PICHON BARON 碧尚男爵	90pts	1996	PAUILLAC 波雅克	750	12	OWC EX- CHATEAU				14,000 - 22,000
203	PICHON BARON IMPERIAL 碧尚男爵	91pts	1988	PAUILLAC 波雅克	6000	1	OWC EX- CHATEAU				22,000 - 40,000
LAFITE ROTHSCHILD 拉菲											
204*	LAFITE ROTHSCHILD 拉菲	94pts	1982	PAUILLAC 波雅克	750	1					24,000 - 38,000
PICHON BARON 碧尚男爵											
205	PICHON BARON 碧尚男爵	91pts	1988	PAUILLAC 波雅克	750	12	OWC EX- CHATEAU				16,000 - 25,000
206	PICHON BARON 碧尚男爵	91pts	1988	PAUILLAC 波雅克	750	12	OWC EX- CHATEAU				16,000 - 25,000
207	PICHON BARON 碧尚男爵	91pts	1988	PAUILLAC 波雅克	750	12	OWC EX- CHATEAU				16,000 - 25,000
LAFITE ROTHSCHILD 拉菲											
208	LAFITE ROTHSCHILD 拉菲	92pts	2007	PAUILLAC 波雅克	750	12	OWC				60,000 - 90,000
209	LAFITE ROTHSCHILD 拉菲	92pts	2007	PAUILLAC 波雅克	750	12	OWC				60,000 - 90,000
210	LAFITE ROTHSCHILD 拉菲	92pts	2007	PAUILLAC 波雅克	750	12	OWC				60,000 - 90,000
211	LAFITE ROTHSCHILD 拉菲	92pts	2007	PAUILLAC 波雅克	750	12	OWC				60,000 - 90,000
MOUTON ROTHSCHILD Special Leather Case 木桐 (特別皮製箱)											
212	MOUTON ROTHSCHILD Special Leather Case 木桐 (特別皮製箱)	97+pts	2000	PAUILLAC 波雅克	750	6	OLC				75,000 - 120,000
213	MOUTON ROTHSCHILD Special Leather Case 木桐 (特別皮製箱)	97+pts	2000	PAUILLAC 波雅克	750	6	OLC				75,000 - 120,000

CONDITIONS OF SALE

Buyer's Agreement

The following pages are designed to give you useful information on how to buy at auction. Asian Art Auction Alliance Company Limited's (AIAIAA) staff will be happy to assist you. However, it is important that you read the following information carefully and note that AIAIAA acts for the seller. By bidding at auction, you agree that this Buyer's Conditions of Sale ("Conditions of Sale"), along with Glossary of Abbreviations and Absentee Bids all published by or for Asian Art Auction Alliance Company Limited and all incorporated into the Conditions of Sale constitute your entire agreement ("Agreement") with AIAIAA and the owner ("seller") with respect to the property listed in this catalogue. AIAIAA may amend this Agreement from time to time and at any time before, and during, any auction through posted notices, addenda or errata or through AIAIAA's website and/or oral announcements during the sale. By bidding at auction, you agree to be bound by all terms and conditions of the Agreement.

Buying's Premium

A Buyer's Premium at 20% will be added on hammer price and is payable by the buyer as part of the total purchase price. All bids are due in Hong Kong Dollars.

Pre-sale Estimates

Pre-sale estimates are intended as a guide for prospective buyers. Any bid between the high and low pre-sale estimates would, in our opinion, offer a chance of success. However, all lots can realize prices above or below the pre-sale estimates. It is advisable to consult us nearer the time of sale as estimates can be subject to revision. The estimates printed in the auction catalogue do not include the buyer's commission or any taxes.

Cataloguing of old wines

Wines are catalogued as accurately as possible at the time of going press. However, buyers must take into consideration the natural variations and conditions of cases, labels, ullages, corks and wines. AIAIAA is unable to accept returns based on such variations.

O No Reserve

Unless indicated by a box (O), each Lot in this catalogue is sold subject to a reserve price, which is confidential hammer price and the minimum price below which the Lot will not be sold. The reserve is generally set at a percentage of the low estimate and will not exceed the low estimate for the lot. If any lots in the catalogue are offered without a reserve, these lots are indicated by a box (O). If all lots in the catalogue are offered without a reserve, a Special Notice will be included to this effect and the box symbol will not be used.

No Guarantee

In no event whatsoever do Sellers or AIAIAA or any of their respective officers, employees or agents make any oral or written express or implied representations, warranties or guarantees as to the merchantability, fitness for a particular use, the correctness of any catalogue description or other description as to the origin, physical condition, quality, rarity, authenticity, attribution, value, estimated value, importance, provenance, exhibition history, historical relevance or bibliographic references concerning any item of Property.

Bidding at the Auction

Bids may be executed in person by paddle during the auction, in writing prior to the sale, by telephone or online. By bidding at auction, you represent and warrant that:

- You are at least eighteen years of age.
- You have the legal authority, right, and capacity to buy, receive, possess and otherwise deal in any Lot purchased.
- Any bids made by you or on your behalf are not pursuant to any anti-competitive agreement and are otherwise in compliance with all applicable law.

Bidding in Person

To bid in person, you will need to register for and collect a numbered paddle before the auction begins. Proof of identity and age will be required. AIAIAA may require you to produce bank or other financial references. AIAIAA retains the absolute right to refuse any prospective bidder admission to or participation in any auction. Should you be the successful buyer of a lot, please ensure that your paddle can be seen by the auctioneer and that it is your number that is called out. Should there be any doubts as to price or buyer, please draw the auctioneer's attention to it immediately. All lots sold will be invoiced to the name and address in which the paddle has been registered and cannot be transferred to other names and addresses.

Please do not mislay your paddle; in the event of loss, please inform AIAIAA staff immediately. At the end of the sale, please return your paddle to the registration desk.

Absentee Bidding

You are expressly advised to read the Absentee Bids form which is part of this Agreement. If you cannot attend the auction, we will be happy to execute written bids on your behalf. A bidding form can be found at the back of this catalogue. This service is free and confidential. Lots will always be bought as cheaply as is consistent with other bids, the reserves and AIAIAA's commission. In the event of identical bids, the earliest received will take precedence. Always indicate a "top limit" – the hammer price to which you would bid if you were attending the auction yourself. "Buy" and unlimited bids will not be accepted.

Absentee bids must be placed in the currency of Hong Kong Dollars. If AIAIAA receives identical written bids for a particular Lot and these bids are the highest amount for that Lot at auction, such Lot will be sold to the absentee bid first received. Accordingly, AIAIAA is in no event liable for any errors or omissions in executing such written bids or for any failure to execute any such bids.

Telephoned absentee bids must be confirmed before the sale by email to info@aaa-alliance.net or fax to number +852 2824 8210.

To ensure a satisfactory service, please ensure that we receive your bids at least 24 hours before the sale.

Bidding by Telephone

If you cannot attend the auction, it is possible to bid on the telephone on lots with a minimum low estimate of HK\$15,000. Telephone bidding is offered as a courtesy to bidders who cannot be present at the auction in person, by agent, or by written absentee bid. The entry of telephone bids is a free service and is undertaken by AIAIAA subject to its obligations at the time of auction. As the number of telephone lines is limited, it is necessary to make arrangements for this service 24 hours before the sale.

We also suggest that you leave a maximum bid which we can execute on your behalf in the event we are unable to reach you by telephone. Multi-lingual staffs are available to execute bids for you. Accordingly, AIAIAA is in no event liable for any errors or omissions in executing such telephone bids or for any failure to execute any such bids.

Online Bidding

If you cannot attend the auction, it is possible to bid online. A registration form for online bidding can be found at www.aaa-alliance.hk. This service is free and confidential. To ensure a satisfactory service, please ensure that we receive your registration form at least 24 hours before the sale.

Options

A parcel is a group of lots of the same type and quantity of wine. There may be some discrepancies between different lots in a parcel with respect to level, condition or otherwise, as set forth in the catalogue descriptions for each lot. At the auctioneer's discretion, the successful bidder of the first lot in a parcel shall have the option, but not the obligation, to purchase in consecutive order one or more of the remaining lots in the parcel, each at the same successful bid price as the first lot. If any lots in the parcel are not purchased, the auctioneer will open the bidding on the next unsold lot in the parcel and the successful bidder of that lot shall have the option, but not the obligation, to purchase in consecutive order one or more, if any, of the remaining lots in the parcel, each at the newly established successful bid price.

Bidding

The auctioneer may open the bidding on any lot by placing a bid on behalf of the seller. The auctioneer may further bid on behalf of the seller, up to the amount of the reserve, by placing consecutive or responsive bids for a lot.

Once bidding has reached the Lot's reserve price, the auctioneer will not bid on behalf of the Seller and will only accept bids from parties other than the Seller or the Seller's agent. AIAIAA reserves the right to bid for its own account on any Lot, subject to the same terms and conditions applicable to all other Buyers. In no event shall AIAIAA be liable for any errors in entering any bids or for failure to enter any bids.

Auctioneer's Discretion

AIAIAA and/or auctioneer has the sole and absolute discretion to divide any Lot, combine any two or more Lots, withdraw any Lots, refuse any bid, advance the bidding, including changing the increments, in such a manner as he may see fit and, in the event of error or dispute, to determine the successful bidder, to continue the bidding, to cancel the sale, or to reoffer and resell the disputed Lot.

Taxes

Neither AIAIAA nor Seller assume any liability whatsoever for the collection of any taxes. Taxation is determined by the governing body of the final destination of the shipment. Successful bidders are required to comply with their respective jurisdictions' regulations regarding importation of alcoholic beverages. AIAIAA assumes no tax liability whatsoever by virtue of arranging any customer's shipping.

Payment

Payment is due in HK Dollars immediately after the sale and should be made before 1st February, 2013 by the following methods: Cash, Cheque, Wire Transfer and Credit Card (must present in person). All overdue balance will bear interest at the rate of 2% per month on hammer price.

If AIAIAA's policy to request any new clients or buyers preferring to make a cash payment to provide proof of identity (by providing some form of government issued identification containing a photograph, such a passport, identity card or driver's license) and confirmation of permanent address. Cheques should be made payable to Asian Art Auction Alliance Co., Ltd. Although personal and company cheques drawn in HK Dollars on Hong Kong banks are accepted, you are advised that property will not be released until such cheques have cleared. Thank you for co-operation.

Wire transfer should be made to:

The Hongkong and Shanghai Banking Corp. Ltd.
1 Queen's Road Central, Hong Kong
Beneficiary: Asian Art Auction Alliance Co., Ltd.
Account No: 640-089389-838
SWIFT: HSBCHKHHHKH

Please include your name and invoice number with your instructions to your bank. If you wish to pay for any purchase with your Visa, Mastercard or UnionPay, you must present the card in person to AIAIAA. All charges are subject to acceptance by AIAIAA and Visa, Mastercard or UnionPay, as the case may be. In the case a charge is not approved, you will nevertheless be liable to AIAIAA for all sums incurred by you. Credit card purchases may not exceed HK\$200,000.

Please note that AIAIAA reserves the right to decline payments received from anyone other than the buyer of record and that clearance of such payments will be required. Please contact our staff if you have any questions concerning clearance.

Date of wine arrival

Wine will be shipped after auction from overseas storage and will reach Hong Kong on/before 6th February, 2013. Wines will be available for picked up upon arrival to our Hong Kong storage.

Collection

Collection from AIAIAA Hong Kong storage will be by appointment only. At least 3 working days notice must be given by email. All clients (or their agents e.g. shippers) must examine all purchases or consignments premises from which they are collected. It is AIAIAA policy to request proof of identity on collection of a lot. Lots will be released to you or your authorized representative without further delay if payment has been received by AIAIAA in Hong Kong. Removal, interest, storage and handling charges will be levied on uncollected lots.

Release of Lots

Authority for the release of lots to the buyer will be an Email Release Order provided by AIAIAA which will be issued only after full payment has been received and appropriate identification has been provided. All enquiries relating to release should be directed to AIAIAA after the Email Release Order has been issued to the buyer.

Hong Kong Delivery

Once payment has been received by AIAIAA and Email Release Form has been issued, the wines may be delivered according to the instructions provided to AIAIAA. Shipping by commercial means, particularly of older wines, can be very risky and is at the buyer's risk. Please note that AIAIAA does not ship wine to buyers. AIAIAA will forward instructions and collection requests from buyers to forwarding company for all delivery. On behalf of buyer, AIAIAA will arrange shipping or schedule a collection, subject to applicable law. All shipping and insurance costs and expenses must be pre-paid. A lot or invoice can only be delivered to one address (it is not possible to split a lot or invoice for delivery to more than one address.)

Delivery outside Hong Kong

Please contact AIAIAA for delivery outside Hong Kong:

Asian Art Auction Alliance Co. Ltd.
2/F, Shui On Centre, 6-8 Harbour Road,
Wanchai, Hong Kong
Telephone: +852 2824 8375
Fax: +852 2824 8210
Contact Person: Ms Hilda Lau
Email: hilda.lau@aaa-alliance.net

Where it is necessary to have a license to import wines, procural of the license shall be the sole responsibility of the buyer. All agents/shippers collecting wine on behalf of buyers for non-Hong Kong shipments must examine consignments at AIAIAA's premises from which they are collected. AIAIAA will not refund any shipping charges under any circumstances. Please be advised that most countries regulate the shipment of wine. We urge you to investigate your country's regulations before bidding or arranging shipment of wine into your country. AIAIAA shall not assume any obligation nor bear any responsibility whatsoever for applying for or obtaining any permits or licenses. Therefore, all bidders are strongly advised to investigate the specific requirements to determine the manner in which alcoholic beverages shall be brought into their country so as to comply with all local regulations. AIAIAA makes no representation to the legal rights of anyone to ship or import alcoholic beverages into any country. Wines may be sold and delivered only to persons who are 18 years old or above.

Re-packing of Wines for Shipping outside Hong Kong

AIAIAA strongly recommends all wines to be re-packed into Styrofoam cartons for any shipment outside Hong Kong. AIAIAA shall not responsibility for shipments outside Hong Kong, regardless of whether the wines have been repacked or not. It is the responsibility of the buyer or their shipping agent to re-pack wines into styrofoam cartons, otherwise wines may be released in cartons/wooden case may not suitable for international shipping. When requesting wines to be re-packed, please indicate AIAIAA whether you want your shipper to collect any original wooden case. AIAIAA will also release any original wooden case to the shipper, unless otherwise instructed by the buyer.

Exportation / Importation

The export of any lot from Hong Kong or import into any other country may be subjected to one or more export or import licenses being granted. It is the buyer's responsibility to obtain any relevant export or import license. Moreover, local laws may prohibit the importation and/or the resale of wine. The denial of any license required or delay in obtaining such license cannot justify the cancellation of the sale or any delay in making payment of the total amount due. AIAIAA recommends that you retain all import and export papers, including licenses, as in certain countries you may be required to produce them to governmental authorities. Neither AIAIAA nor Seller make any representation or warranty as to the legal right of any party to ship or import alcoholic beverages to or from any jurisdiction. Further, neither AIAIAA nor Seller assume any obligation or bears any responsibility whatsoever for applying for or obtaining any such licenses or permits.

Failure to Collect Purchase

If the Buyer pays the full invoice amount but fails to collect a purchased lot within 14 days after confirmation of wine arrival, the Lot will be stored at the Buyer's expense and risk.

If a purchased lot is paid for but not collected within 3 months of the auction, the Buyer authorizes AIAIAA, having given notice to the Buyer, to arrange a resale of the item by auction or private sale, with estimates and reserves at AIAIAA's discretion. The proceeds of such sale, less all costs incurred by AIAIAA, will be forfeited unless collected by the Buyer within 1 year of the original auction.

Storage and Charges

Complementary storage for wine purchased in this sale will be available at AIAIAA's storage for a period of 14 days after confirmation of wine arrival. By bidding in this auction, you agree and authorize AIAIAA to provide storage for your purchased wines at their prevailing rates, at your expenses, until such time as you collect or take delivery of your wines. Buyers failing to pick up purchased wines within free storage period offered by AIAIAA will be charged HK\$50 per lot per month. Both storage and handling charges will apply.

Loss or Damage

Non-arrival, loss, breakage and shortage should be notified to both AIAIAA and AIAIAA in writing within three days of delivery, which must be examined in the presence of the carrier on arrival. In the event of non-arrival, the buyer must inform AIAIAA in writing within 14 days of the date of the Email Release Order. AIAIAA is not responsible for any acts or omission of any shipper, including, without limitation, any packing, shipping, delivery or insurance for purchased lots.

All Lots Sold AS IS

Bidding at auction you agree that all purchases are taken "AS IS" without representations of warranties of any kind. In no event shall you bring an action against AIAIAA or seller in connection with any claim that the item is not as described in the catalogue or on the label.

Data Protection

AIAIAA will use information provided by its clients or which AIAIAA otherwise obtains relating to its clients for the provision of auction and other wine-related services, administration, marketing and otherwise to manage and operate its business, or as required by law. In order to fulfill the services clients have requested, AIAIAA may disclose information to third parties (e.g. shippers). Some countries do not offer equivalent legal protection of personal information to that offered within Hong Kong. Third parties are required to respect the privacy and confidentiality of our clients' information as provided within Hong Kong whether or not they are located in a country that offers equivalent legal protection of personal information. By agreeing to these Conditions of Sales, Clients agree to such disclosure.

Governing Law

This agreement, Conditions of Sale and all aspects of all matters, transactions or disputes to which they relate or apply shall be governed by and interpreted in accordance with Hong Kong laws.

Jurisdiction

For the benefit of AIAIAA, all Bidders and Sellers agree that the Hong Kong Courts are to have exclusive jurisdiction to settle all disputes arising in connection with all aspects of all matters or transactions to which these Conditions of Sale relate or apply. All parties agree that AIAIAA shall retain the right to bring proceedings in any court other than the Hong Kong Courts.

銷售條款

買價協議

下文在給予閣下有關如何在拍賣會上購買之實用資料。Asian Art Auction Alliance Company Limited (A|A|A|A) 職員將樂意協助閣下。然而，閣下須細閱下列資料，並須注意A|A|A|A乃為買家行事。在招標拍賣中，閣下須同意此買家銷售條款（“銷售條款”）及當中之詞彙縮寫、境外出價和所有A|A|A|A納入出版的服務條款，以與A|A|A|A和所有列印於拍賣目錄之賣家（“賣方”）構成整個協議（“協議”）。A|A|A|A可通過張貼告示、附錄、目錄表或於A|A|A|A網站和口頭公告，在拍賣期間及任何時候訂本協議。通過拍賣競投，閣下即同意遵守所有銷售條款及協議條件。

買家支付之酬金

買家支付之酬金將加上成交價，作為總買入價之一部分，並由買家支付。酬金將以成交價之20%計算，本拍賣會以港幣結算。

拍賣前估價

拍賣前估價意在於為准買家提供指引。本公司認為，介乎拍賣前高位與低位估價間之任何競投價格均有成功機會。然而，所有拍賣品之價格可能高於或低於拍賣前估價。

由於估價可予修改，因此閣下應在拍賣臨近前諮詢本公司。拍賣圖錄所載之估價並不包括買家支付之酬金或任何稅項。

陳年葡萄酒編錄

葡萄酒編錄會在付印前盡可能做到準確無誤。然而，買家須考慮到葡萄酒會有自然差異，以及包裝盒、標籤、耗損量、酒塞和酒的狀況等。A|A|A|A恕不接受基於此類差異之退貨。

無底價 (〇)

除以〇符號另作注明外，每項在此圖錄之拍賣品均有底價。底價是絕對機密的成交價位，拍賣品不會以低於該價出售。底價通常以低位估價之一定比例來設定，且不會高於低位估價。圖錄中之拍賣品如不設底價，均會以〇符號注明。若在同一圖錄中之所有拍賣品均並非以底價出售，則會就此作出特別提示而不會使用此符號。

不保證

無論在任何情況下，賣方或A|A|A|A或任何其各自職員、僱員或代理人不可作出任何口頭或書面明示或暗示的陳述、保證或擔保，以適銷性。所有拍賣品之說明或其他任何圖錄說明以至來源，拍賣品狀況，質量，稀有性，真實性，歸屬，價值，估計價值，重要性，種類，展示歷史，歷史意義或參考文獻中有任何物品資料僅供參考，A|A|A|A恕不對以上資料作任何擔保。

在拍賣會中競投

競投須就每件拍賣品作出。競投可以由個人親臨拍賣會上舉板示意，亦可在拍賣前以書面參加或以電話競投或網上競投。

於競投前，閣下須承諾並出示：

閣下至少十八歲。

閣下有法定權力、權利和能力購買，及接收、擁有和以其他方式處理在競投中投得之任何拍賣品。

閣下或閣下代表任何的出價不是根據任何反競爭協議，並在其他方面遵守所有適用的法律。

親身競投

親身競投之人須在拍賣會開始前登記及領取號碼牌，並須出示身份證明文件。A|A|A|A可能會要求閣下出示銀行或其他財務證明。A|A|A|A保留拒絕任何潛在投標人進入或參與任何拍賣的權利。

如閣下成功購得拍賣品，請確定拍賣官看到閣下之號碼板及叫出閣下之號碼。如對叫價或買家有任何疑問，請立即向拍賣官示意。

所有書出之拍賣品發票抬頭人為登記號碼板之人士及其地址，而不得轉讓至他人及其他地址。

請勿隨意放置閣下之號碼板；如有遺失，請立即通知拍賣主任。拍賣完結時，請將號碼板交回登記部。

缺席競投

僅希閣下詳細閱讀本協議的缺席競投表格。如閣下未能出席拍賣會，本公司樂意代表閣下進行書面競投。本圖錄後附有競投表格。此為保密之免費服務。拍賣品將會以相對於其他競投價、底價及A|A|A|A委託標之最高價價格得標。倘競投價格相同，則最先競投者有優先權。請列明“最高限價”-即閣下如親身出席拍賣會將作出之成交價。“購買”和無限價競投表格將不獲接納。

缺席競投者必須以港元為貨幣單位。A|A|A|A是在任何情況下都不對任何錯誤或遺漏之缺席競投表格執行書面投標或任何此類出價及負責。

電話競投者必須於拍賣前把缺席競投表格電郵至info@aaa-alliance.net或傳真至+852-2824-8210確認。為確保獲得滿意之服務，請確保本公司在拍賣前最少24小時收到閣下確認競投之指示。

電話競投

如閣下未能出席拍賣會，可透過電話競投低位估價最低為15,000港元之拍賣品。電話競投是提供給不能出席拍賣競投的投標人，由代理人或以書面競投出價。電話競投是一項免費服務，並由A|A|A|A受理當時的義務拍賣。由於電話線路有限，因此必須於拍賣前24小時安排此項服務。本公司亦建議閣下表明最高限價，以便當本公司不能以電話聯絡閣下時可為閣下進行競投。通曉多國語言之職員可為閣下進行競投。A|A|A|A在任何情況下都不對任何錯誤或遺漏負責。

網上競投

若閣下未能出席拍賣會，亦可通過網上競投（如適用）。網上競投之登記表請詳見www.aaa-alliance.hk。此為保密之免費服務。為確保閣下得到滿意服務，請確保我們在拍賣前至少24小時收到閣下之登記表。

選擇權

一批酒是指一批相同種類和數量之葡萄酒拍賣品。如圖錄所描述之每件拍賣品，同一批酒中不同拍賣品在液面、酒質或其他方面可能存在一定差異。拍賣官可酌量決定，成功投得一批酒中第一件拍賣品之競投人可選擇（但無義務）以第一件拍賣品之成功競投價接連購買一批酒中其餘一件或以上拍賣品。倘一批酒內並無售出任何一件拍賣品，拍賣官將為一批酒中下一件未售出之拍賣品開始競投，而成功投得該拍賣品之競投人可選擇（但無義務）以新設定之成功競投價接連購買一批酒中其餘一件或以上拍賣品（如有）。

競投

拍賣官可代表賣家為任何拍賣品叫第一口價以開始競投。拍賣官更可代表賣家以接連投標或競投之方式就拍賣品作出競投直至達到底價。一旦拍賣達到了底價，拍賣官將不會代表賣方出價或接受來自各方以外的賣方或買方的代理人。A|A|A|A同樣接受買主條款和條件約束並有權為自己的賬戶出價。在任何情況下，A|A|A|A都不會承認任何錯誤或為何出價輪迴問題負責。

拍賣品的酌約權

A|A|A|A和/或拍賣官有唯一及絕對的酌約權劃分、合併兩個或以上、或撤回任何拍賣品，以及拒絕任何競投、加連投標包括改變遞增價。A|A|A|A和/或拍賣官可隨時酌約可看到的錯誤或爭議而決定成功競投人、繼續競投、取消出售、轉售或重新競投及採取其合理並認為合適之其他行動。

稅項

A|A|A|A或賣方都不會承擔任何稅費。稅項是由最終目的地的收取貨件者負擔。成功競投人須遵守各自管轄範圍內的進口酒精飲料規章。A|A|A|A將不會承擔任何稅務責任及運費。

付款

拍賣後須即時並在2013年2月1日前以下列方式以港元付款：現金、支票、電匯、信用卡（必須親身持卡出示）所有逾期賬項須按其拍品之落槌價以每月百分之二的利率支付利息。A|A|A|A之政策是要求選擇以現金付款之任何新客戶或買家提供身份證明（通過出示帶有照片並由政府發出之證明，如護照、身份證或駕駛執照）並確認固定地址。支票票以Asian Art Auction Alliance Company Limited為抬頭人。雖然以香港銀行港元開出之個人及公司支票均獲接納，惟敬請留意，本公司須待支票兌現後方會將閣下所購得之物品交付。多謝合作。

電匯須存人以下戶口：

香港上海 豐銀行有限公司

香港皇后大道中1號

帳戶名稱：Asian Art Auction Alliance Company Limited

帳戶號碼：640-089389-838

SWIFT代碼：HSBCKHXXXX

閣下向銀行發出指示時請附上閣下之名稱及發票號碼。若以Visa、Mastercard、或銀聯信用卡結帳，請親身持卡到本公司付款。本公司及Visa、Mastercard、或銀聯（視情況而定）保留是否接納該等付款之權利。如該等付款不被接納或撤回，閣下仍須承擔付款責任。信用卡付款上限為200,000港元。請注意，A|A|A|A保留權利拒絕收取所記錄買家以外任何人士之付款，有關付款必須結清。如對結清有任何疑問，請聯絡本公司職員。

葡萄酒到達日期

拍賣後，葡萄酒將從海外倉庫在2013年2月6日或之前運抵香港。葡萄酒到達後便可領取。

領取

要自A|A|A|A領取貨品必須先行預約，並以電郵給予不少於三個工作天通知。所有客戶（或其代理，如承運人）在向倉庫職員領取購買品或付運品時，須檢查並確認所有購買品或付運品方作領取。根據A|A|A|A之政策，領取人必須在領取拍賣品時出示身份證明。A|A|A|A在香港收取全數結清之款項後，便會向閣下或閣下之授權代表發放拍賣品。未領取之拍賣品將會被收取搬運、利息、儲存及手續費。

發放拍賣品

向買家發放拍賣品之權力憑證為由A|A|A|A提供之電郵發放通知單，該通知單僅會於已悉數收取付款及獲得提供適當之身份證明後方會發出。A|A|A|A發出電郵發放通知單即構成交付拍賣品。在電子發放通知單發給買家後一切與發放有關之查詢應向A|A|A|A提出。

在香港境內付運

A|A|A|A收到付運款並向買家發出電郵發放表格，葡萄酒便可按接獲之指示交付。以商業方式付運風險可能很大，尤其是付運陳年葡萄酒，有關風險須由買家承擔。請注意，A|A|A|A不會負責向買家付運葡萄酒。A|A|A|A會將買家之付運及領取指示轉達至貨運公司，並於適用法律下代表買家安排運輸。A|A|A|A將所有自買家接獲之付運及保險費用及開支預先支付。同一拍賣品或發票僅可送交至一個位址（不能將同一拍賣品或發票送交至一個以上之位址）。

付運至香港以外地方

請聯絡A|A|A|A：

Asian Art Auction Alliance Co. Ltd.

香港灣仔香港道6-8號瑞安中心2樓

電話：+852 2824 8375

傳真：+852 2824 8210

聯絡人：Ms. Hilda Lau

電郵：hilda.lau@aaa-alliance.net

如連口葡萄酒需要特別牌照，則取得有關牌照為買家個人之責任。所有代表買家領取葡萄酒作香港以外付運之代理/承運人，必須在向倉庫職員領取付運品時檢查並確認有關付運品。在任何情況下，A|A|A|A均不會遞延任何付運費用。請注意，大部分國家對葡萄酒之付運均作出規管。A|A|A|A建議閣下在競投葡萄酒或安排付運至閣下之國家前，須查核閣下國家之規定。A|A|A|A不會承擔或負上任何申請或取得任何許可證或牌照之責任，並不會以此作為買賣條件之一。因此，為符合當地所有規例，A|A|A|A強烈建議所有競投人查核運送酒精類飲料至其國家之具體規定，以決定運送方法。A|A|A|A不對任何人士付運或進口酒精類飲料至任何國家之法定權利作出任何陳述。葡萄酒僅可出售及付運予18歲或以上之人士。

重新把酒包裝以作付運至香港以外地方

A|A|A|A強烈建議把酒重新包裝在泡沫塑料盒以作運輸至香港以外地方。A|A|A|A不能安排，亦不會負責付運至香港以外地方。這是買家或其承運代理之責任把酒重新包裝在泡沫塑料盒以作運輸。否則，包裝在紙盒之酒不合國際運輸之酒可能會被發放。無論酒是否被重新包裝，A|A|A|A均不會承擔在運輸中酒的損毀責任。當要求酒被重新包裝時，請指示A|A|A|A閣下是否不希望閣下的承運人領取任何原裝木盒。除非將酒交到買家指示，A|A|A|A亦將會發放任何原裝木盒給承運人。

出口/入口

任何拍賣品均可能需要取得一個或多個出口或進口牌照方可自香港出口或進口至其他國家。買家須負責取得任何有關之進口或出口牌照。此外，當地法律可能禁止葡萄酒進口和/或轉售。任何牌照照被拒或遞延取得均並非取消買賣或任何延遲支付全部欠款之充分理由。A|A|A|A建議閣下保留所有進出口文件（包括牌照），在這些國家閣下可必須向政府當局出示此類文件。A|A|A|A或賣方都不會代表任何一方向進口酒精飲料作出任何聲明或保證的法律權利以至任何管轄權。此外，A|A|A|A或賣方都不會承擔任何執照或許可證申請或索取的義務。

未領取購買品

倘買家已支付發票全數之費用，但未於葡萄酒運抵香港起計十四日內領取已購買之拍賣品，拍賣品之存放費用（及風險）將由買家承擔。倘已支付所購買之拍賣品之費用，但未於拍賣會後三個月內領取該拍賣品，則買家授權A|A|A|A（經知會買家）安排以拍賣或私人出售方式重售該物品，而估價及底價將由A|A|A|A酌量決定。除非買家能在該拍賣會後一年內收取該出售之所得款項（經扣除A|A|A|A產生之所有費用），否則該筆款項將被沒收。

儲存及收費

A|A|A|A將為本次拍賣所賣出之葡萄酒提供自葡萄酒運抵香港日期起計十四天免費儲存服務。於本拍賣會上作出競投，即表示閣下同意並授權A|A|A|A按其現行收費率向閣下所購得之葡萄酒提供儲存服務，直至閣下領取或收取葡萄酒為止，費用由閣下承擔。如買家未能於A|A|A|A提供之免費儲存期內提貨，將須就每拍賣品支付50港元月費。A|A|A|A會收取儲存及手續費。

損失或損壞

葡萄酒運抵時須在承運人面前進行檢查，如有任何損失、損毀及缺失等情況，應在收貨後三天內以書面方式通知A|A|A|A。如沒有收到葡萄酒，買家須在電子發放通知單日期後十四天內以書面方式通知A|A|A|A。A|A|A|A概無須為任何承運人之任何行為或錯誤負責，包括但不限於任何所購買拍賣品之包裝、付運、交付或保險。

所有拍賣品出售現狀

招標拍賣中閣下須同意所有採購都以“現狀”出售，沒有表示任何形式的擔保。在任何情況下A|A|A|A或賣方的都不接受任何因投訴案件與目錄或在標籤上有差異的索賠。

資料保障

A|A|A|A將根據法律規定使用客戶提供或其他方式獲得之資料，作為A|A|A|A提供葡萄酒拍賣和其他相關的服務、管理、營銷和其他方式管理以及經營其業務之根據。A|A|A|A有可能向第三方，如付運人，披露有關資料，並要求該第三方尊重客戶之私隱，將客戶資料保密並提供與香港相同程度之個人資料保護，不論他們所處國家是否提供對個人資料之相同法律保護。客戶同意本業務規則，即同意有關披露。閣下可以隨時通知A|A|A|A防止閣下個人資料用於營銷目的。

監管法例

本銷售條款及買賣規則，及其有關或使用之所有事宜、交易或爭議之各方面須受香港法例規管並按其註釋。

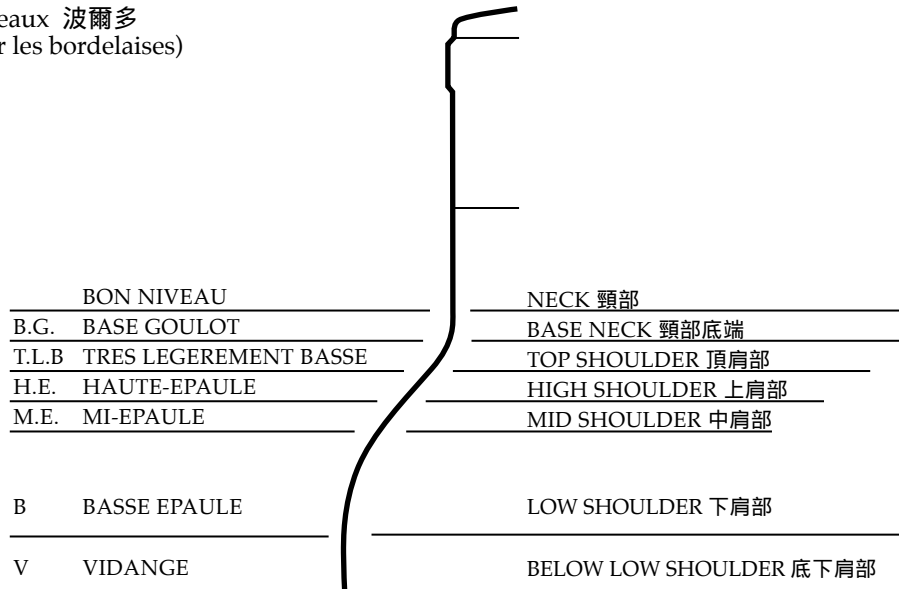
司法權

就A|A|A|A之利益而言，所有競投人及買家同意香港法院擁有專有司法權，調解所有因與該等買賣規則有關或適用之所有事宜或交易之各方面而產生之爭議。各方均同意A|A|A|A保留權利在香港法院以外之任何法院提出訴訟。

BOTTLES DESCRIPTION

酒瓶狀況

- Bordeaux 波爾多 (Pour les bordelaises)



ULLAGES (LEVEL OF WINE) 葡萄酒耗損量 (液面)

* For Bordeaux, Port and other wines in bottles with defined shoulders the ullage / level is shown, if relevant, by its relevant position in the bottle. Our interpretations are as follows:	
* 對於波爾多 (Bordeaux)、波特酒 (Port) 及其他盛載於有明顯瓶肩之酒瓶中之葡萄酒，可根據瓶頸處酒液高度來判斷其耗損量。本公司之詮釋如下：	
u.	Ullage/Ullages (Levels) 耗損量 (液面)
n.	Within neck; the normal level of young wines 酒液高度在瓶頸之中；年份較新之葡萄酒一般都在這個高度
bn.	Bottom neck; completely acceptable for any age of wine 瓶頸底部；對任何年份之葡萄酒這樣之酒液耗損量為完全可以接受
vt.	Very top shoulder; completely acceptable for any age of wine 酒液在瓶頸下面肩部位置；對任何年份之葡萄酒這樣之液耗損量為完全可以接受
ts.	Top shoulder; usual level for wines over 15 years old 酒液處於瓶肩之高處；通常葡萄酒之年份在十五年以上時方有這樣之耗損量
hs.	High shoulder; typical reduction through the cork, usually no problem 酒液處於瓶肩上方位置；酒液一般通過酒塞揮發掉，但問題一般不大
ms.	Mid shoulder; usually some deterioration of the cork and therefore some variation 酒液在瓶肩中部位置；一般反映酒塞有一定程度之損壞，因此有差異
* For Burgundy, German and other wines in bottles with sloping necks, the ullage is shown in centimeters, measured from the base of the cork.	
* 勃根地、德國及其他盛載於瓶肩傾斜之酒瓶中之葡萄酒，可從酒塞底部開始量度，以顯示葡萄酒之耗損量 (以厘米表示)。	

BOTTLE SIZES 酒瓶尺寸

hb	Half Bottle 半瓶裝
imp.pt.	Imperial Pint 法定品脫
bt(s)	Bottle(s) 瓶裝
ltr.	Liter 公升裝
mag.	Magnum 二標準瓶裝
m-j.	Marie-jeanne 三標準瓶裝
d.mag.	Double Magnum 四標準瓶裝
jero.*	Jeroboam 五標準瓶裝*
reho.	Rehoboam 六標準瓶裝
imp.	Imperial 八標準瓶裝
* Up to 1978, Jeroboams were generally bottled in 4.5 liter bottles rather than 5 liter bottles.	
* 直至1978年前，Jeroboams一般盛載於4.5公升而非5公升之酒瓶。	

PACKING 包裝

OC	Original Carton 原裝紙盒
OWC	Original Wooden Case 原裝木盒
N.I.	Non inspecté (Not appraised)
N.M.	Non millésimé (No Vintage)

ÉTIQUETTES (LABELS) 標籤

e.l.a.	Lightly Damaged	輕微受損
e.a.	Damaged or Torn	受損或撕裂
e.t.a.	Heavily Damaged	嚴重受損
e.l.s.	Lightly Dirty	輕微沾污
e.f.s.	Faded or Dirty	褪色或沾污
e.t.	Stained	沾污
e.t.h.	Nicked or Trace Moisture	有裂口或潮濕痕跡
e.q.i.	Tattered	破爛受損
s.e.	No Label	無標籤

CAPSULES 蓋囊

c.l.a.	Lightly Damaged	輕微受損
c.a.	Damaged or Cut	受損或有刻痕
c.l.s.	Lightly Dirty	輕微沾污
c.c.	Corroded	受腐蝕
c.s.	Dirty	沾污
s.c.	No Capsules	不包括容器
s.c.a.	Sign of seepage	滲流跡象

COLLERETTES (NECK LABELS) 瓶頸標籤

clm.a.	Damaged or Torn	受損或撕裂
clm.s.	Dirty	沾污
s.c.m.	No Vintage Neck Label	無年份標籤

Paddle Registration Form 拍賣投標牌登記表格

Sale Title : ASIAN ART AUCTION ALLIANCE WINE SALE
拍賣名稱 : A|A|A|A 葡萄酒拍賣

Sale Date : 4:00pm Sunday 20th January 2013
拍賣日期 : 2013年1月20日 星期日 下午4時正

BIDDER'S INFORMATION 投標者相關資料

<input type="checkbox"/> Mr. 先生 <input type="checkbox"/> Ms. 女士		Last Name 姓	First Name 名
Address 地址			Country 國家
Company Name and Telephone No. 公司名稱及電話		ID/Passport No. 身分證號碼/護照號碼	
Home Telephone No. 住宅電話	Cell Phone No. 手機電話	Fax No. 傳真號碼	E-mail 電郵

BANK INFORMATION 銀行訊息

Name of Bank 往來銀行名稱	Address of Bank 往來銀行地址	Bank Telephone No. 往來銀行電話
Name of Account 帳戶名	Account No. 帳號	Name of Account Officer 銀行連絡人
Credit Card Account Number 信用卡帳戶號碼	Type of Credit Card 信用卡類別	

DECLARATIONS 委託申請人必讀事項

- ◆ I understand that the purchased price payable will be the sum of the "final bid" and a premium. The premium should be calculated at 20%. The currency of Asian Art Auction Alliance will be calculated at Hong Kong Dollar.
本人知悉若競標成功，本人應支付之購買價款為最後落槌價加上服務費，服務費將以20%計算，本拍賣會以港幣計算。
- ◆ I understand that all payment must be made before February 1, 2013. Please pay to:
本人知悉若款項須於2013年2月1日前悉數付清。請付款到：
Beneficiary Name 受款人姓名: Asian Art Auction Alliance Company Limited
Account Number 戶口號碼: 640-089389-838
Beneficiary Bank 受款銀行: The Hongkong and Shanghai Banking Corporation Limited
Beneficiary Bank Address 受款銀行地址: 1 Queen's Road Central, Hong Kong
SWIFT: HSBCHKHCHK
- ◆ I understand that all overdue balance will bear interest on hammer price at the rate of 2% per month.
本人明瞭所有逾期賬項須按其拍品之落槌價以每月百分之二的利率支付利息。
- ◆ All properties are sold "AS IS" without any representations or warranties, and Asian Art Auction Alliance is not responsible for any damages and defects of the lots.
所有作品皆以“現狀”拍賣。【A|A|A|A】對拍品的任何損傷及缺陷不承擔任何責任。
- ◆ I authorize Asian Art Auction Alliance to request my personal financial reference.
本人授權【A|A|A|A】索取本人之財務資料。
- ◆ I understand the Terms and Conditions of Business are varied in different auction houses and agree to be bound by the conditions mentioned in this catalogue.
本人明瞭拍賣規則之條款，因應不同拍賣公司而有所不同，並同意遵循本圖錄內的拍賣規則及條款。
- ◆ After the hammer is down, Asian Art Auction Alliance will not accept any cancellation.
自落槌之時起，【A|A|A|A】不接受任何取消要求。

Signature 簽名	Date 日期
We must have your signature to execute this bid 本公司須取得閣下之簽名後，方可接受競標	/ / Month 月 Date 日 Year 年
Print Name (IN BLOCK LETTERS) 姓名(請用正楷)	

This space is for office use only. Note:	<input type="checkbox"/> Copy of passport	<div style="border: 1px solid black; width: 100%; height: 100%;"></div>
	<input type="checkbox"/> Other I.D. : _____	
	Registration No. : _____	

The Paddle Registration Form must be emailed or faxed to the Customer Service Department at least 24 hours before the auction begins. The bidder can pick up the Paddle upon arrival.
為便利投標者，請於拍賣前24小時電郵或傳真至【A|A|A|A】客戶服務部，到會場時即可直接領取拍賣投標牌。

Asian Art Auction Alliance 【A|A|A|A】

2nd Floor, Shui On Centre, 6-8 Harbour Road, Wanchai, Hong Kong

Tel +852-2824-8374 Fax +852-2824-8210 wine@aaa-alliance.hk

GUIDE FOR ABSENTEE BIDDERS 給缺席競投人指引

Absentee Bids

If you are unable to attend an auction in person, and wish to place bids, you may give instructions to A|A|A|A to bid on your behalf. We will then try to bid the lot or lots of your choices for the lowest price possible, and never for more than the top amount have you indicated. This service is free and confidential. Telephone bidding is offered as a courtesy, and no guarantee of successfully contacting the phone bidder is made by Asian Art Auction Alliance Co., Ltd.

Absentee Bid Form

Each absentee bid form should contain bids for one sale only. Please place your bids as early as possible. In the event of identical bids, the earliest received will take precedence. Where appropriate your bids will be rounded down to the nearest amount consistent with the Auctioneer's bidding increments. Please use the absentee bid form in this catalogue and be sure to record accurately the lot numbers and descriptions and the top hammer price you are willing to pay for each lot. "Buy" or unlimited bids will not be accepted. Alternative bids can be placed by using the work "OR" between lot numbers. Bids must be placed in the same order as the lot numbers appear in the catalogue.

Data Protection

A|A|A|A will use information provided by its clients or which A|A|A|A otherwise obtains relating to its clients for the provision of auction and other wine-related services, administration, marketing and otherwise to manage and operate its business, or as required by law. In order to fulfill the services clients have requested, A|A|A|A may disclose information to third parties. Some countries do not offer equivalent legal protection of personal information to that offered within Hong Kong. Third parties are required to respect the privacy and confidentiality of our clients' information as provided within Hong Kong whether or not they are located in a country that offers equivalent legal protection of personal information. By agreeing to these Conditions of Sales, Clients agree to such disclosure.

缺席競投

閣下如未能親身出席拍賣會但欲作出競投，可向A|A|A|A之競投部發出指示，由其代表閣下競投。本公司將盡可能以最低價格購買閣下所選之拍賣品而不出閣下所指示之最高價格。此為保密之免費服務。請注意，A|A|A|A為方便未能出席拍賣會之客戶提供此服務，雖然A|A|A|A將盡其所能，但不會為執行競投指示之錯誤或未能執行競投指示負責。

缺席競投表

每份缺席競投表僅供填寫單一拍賣之競投價。請儘早作出競投。倘出現相同競投價，則最先收到之競投享有優先權。如適當時，閣下之競投價將會被大概調整至最接近拍賣官之遞增競投金額。請使用所提供之缺席競投表，並確保準確填寫拍賣品編號及描述，以及閣下願意就每件拍賣品支付之最高成交價。“購買”及無限價競投將不獲接納。可於拍賣品編號之間以“或”字作兩者中擇一之競投。競投須根據圖錄內所示拍賣品編號之相同次序作出。

資料保障

A|A|A|A將根據法律規定使用客戶提供或以其他方式獲得之資料，作為A|A|A|A提供葡萄酒拍賣和其他相關的服務、管理、營銷和其他方式管理及經營其業務之根據。A|A|A|A有可能向第三方披露有關資料，並要求該第三方尊重客戶之私隱，將客戶資料保密並提供香港相同程度之個人資料保護，不論他們所處國家是否提供對個人資料之相同法律保護。客戶同意本業務規則，即同意有關披露。閣下亦可以隨時通知A|A|A|A防止閣下個人資訊用於營銷目的。

EXAMPLE OF HOW TO USE THE ABSENTEE BID FORM 如何使用缺席競投表示範

You wish to purchase 1 dozen bottles of Château X 1986. Five cases are available, offered in a parcel from lots 1 through to 5. If you are bidding on a wine which is not part of a parcel, simply enter the lot number and your bid price.

如閣下欲購買12支1986年Chateau X。

現有五箱可供競投，同一批酒編為拍賣品編號1至5。

閣下競投之葡萄酒如非同一批酒之一部分，只須填上拍賣品編號及閣下之競投價即可。

Château X 1986 1986年Château X
Pauillac. 1er Cru Classé Pauillac. 1er Cru Classé

- | | |
|------------------|-----------|
| 1. 12 bts. (owc) | 12瓶(原裝木盒) |
| 2. 12 bts. (owc) | 12瓶(原裝木盒) |
| 3. 12 bts. (owc) | 12瓶(原裝木盒) |
| 4. 12 bts. (owc) | 12瓶(原裝木盒) |
| 5. 12 bts. (owc) | 12瓶(原裝木盒) |

Per lot: HK\$800-1,300 每件拍賣品：800-1,300港元

Lot Number 拍賣品編號	No. of Lots Required 競投拍賣品數量	Lot Description 拍賣品名稱	HK\$ Bid Price (excluding premium) 競投價(港元) (佣金不計算在內)
1 - 5	1		HK\$ Your maximum bid price 閣下之最高競投價(港元)

Absentee Bid Form 委託競標單

Sale Title : ASIAN ART AUCTION ALLIANCE WINE SALE

Sale Date : 4:00pm Sunday 20th January 2013

拍賣名稱 : A|A|A|A 葡萄酒拍賣

拍賣日期 : 2013年1月20日 星期日 下午4時正

BIDDER'S INFORMATION 投標者相關資料

<input type="checkbox"/> Mr. 先生	Last Name 姓		First Name 名	
<input type="checkbox"/> Ms. 女士				
Address 地址			Country 國家	
Company Name and Telephone No. 公司名稱及電話			ID/Passport No. 身分證號碼/護照號碼	
Home Telephone No. 住宅電話	Cell Phone No. 手機電話	Fax No. 傳真號碼	E-mail 電郵	

BANK INFORMATION 銀行訊息

Name of Bank 往來銀行名稱	Address of Bank 往來銀行地址	Bank Telephone No. 往來銀行電話
Name of Account 帳戶名	Account No. 帳號	Name of Account Officer 銀行連絡人
Credit Card Account Number 信用卡帳戶號碼	Type of Credit Card 信用卡類別	

DECLARATIONS 委託申請人必讀事項

- ◆ I understand that the purchased price payable will be the sum of the "final bid" and a premium. The premium should be calculated at 20%. The currency of Asian Art Auction Alliance will be calculated at Hong Kong Dollar.
本人知悉若競標成功，本人應支付之購買價款為最後落槌價加上服務費，服務費將以20%計算，本拍賣會以港幣計算。
- ◆ I understand that all payment must be made before February 1, 2013. Please pay to:
本人知悉所欠款項須於2013年2月1日前悉數付清。請付款到：
Beneficiary Name 受款人姓名: Asian Art Auction Alliance Company Limited
Account Number 戶口號碼: 640-089389-838
Beneficiary Bank 受款銀行: The Hongkong and Shanghai Banking Corporation Limited
Beneficiary Bank Address 受款銀行地址: 1 Queens Road Central, Hong Kong
SWIFT: HSBCHKHKKH
- ◆ I understand that all overdue balance will bear interest on hammer price at the rate of 2% per month.
本人明瞭所有逾期賬項須按其拍品之落槌價以每月百分之二的利率支付利息。
- ◆ All properties are sold "AS IS" without any representations or warranties, and Asian Art Auction Alliance is not responsible for any damages and defects of the lots.
所有作品皆以“現狀”拍賣。【A|A|A|A】對拍品的任何損傷及缺陷不承擔任何責任。
- ◆ I authorize Asian Art Auction Alliance to request my personal financial reference.
本人授權【A|A|A|A】索取本人之財務資料。
- ◆ I understand the Terms and Conditions of Business are varied in different auction houses and agree to be bound by the conditions mentioned in this catalogue.
本人明瞭拍賣規則之條款，因應不同拍賣公司而有所不同，並同意遵循本圖錄內的拍賣規則及條款。
- ◆ After the hammer is down, Asian Art Auction Alliance will not accept any cancellation.
自落槌之時起，【A|A|A|A】不接受任何取消要求。

Signature 簽名	Print Name (IN BLOCK LETTERS) 姓名(請用正楷)	Date 日期 / / Month 月 Date 日 Year 年
We must have your signature to execute this bid 本公司須取得閣下之簽名後，方可接受競標		

Lot Number 拍賣品編號(按數字須序)	No. of Lots Required	Lot Description 名稱	Bid Price 競投價 (Excluding service fee 未包含服務費) (Phone Bidders do not need to fill in 電話競標無須填寫)
			HK\$
			HK\$
			HK\$
			HK\$
			HK\$
			HK\$

The Absentee Bid Form must be emailed or faxed to the Customer Service Department at least 24 hours before the auction begins.

Please contact Asia Art Auction Alliance for further enquiry.

委託競標單須於拍賣前24小時電郵或傳真至【A|A|A|A】客戶服務部。如有任何問題，請與【A|A|A|A】連絡。

Asian Art Auction Alliance 【A|A|A|A】

2nd Floor, Shui On Centre, 6-8 Harbour Road, Wanchai, Hong Kong

Tel +852-2824-8374 Fax +852-2824-8210 wine@aaa-alliance.hk

Please register Internet Bidding at <http://www.aaa-alliance.hk>.
請登入以上網頁登記網上拍賣競投。

Internet Bidding Registration

Gander* : Mr. / Mrs. / Ms.

Last Name* : _____ First Name* : _____ Middle Name(s)* : _____

Email* : _____ Tel* : _____

Identity (HKID, Passport or BR Certificate)* : _____

Country* : _____ City* : _____

Zip code* : _____ Province : _____

Address* : _____

Company Name : _____

Auction* : UAA (United Asian Auctioneers) Wine Auction Jewellery Auction Watches Auction

I have read and agree to our Terms & Conditions.

*Mandatory Fields

JEWELLERY & WATCHES AUCTION WINE AUCTION

Jewellery & Watches Auction

2:30pm Sunday 20th January 2013

Wine Auction

4:00pm Sunday 20th January 2013

Jewellery & Watches Preview

10:00am-8:00pm Saturday 19th January 2013

10:00am-2:00pm Sunday 20th January 2013

Venue

Renaissance Harbour View Hotel Hong Kong
Mezzanine Floor, 1 Harbour Road, Wanchai, Hong Kong

Catalogue

HK\$200

Subscriptions

+852-2824-8374

wine@aaa-alliance.hk

Managing Director & CEO

Yoichiro Kurata

Managing Director

Eijiro Imafuku

Director & CFO

Yusuke Irikiin

Marketing Director

Shingo Tanabe

Operational Director

Elaine Cheung

Auction Department

Hilda Lau

E-mail

A|A|A|A

info@aaa-alliance.net

<http://www.aaa-alliance.hk>

<http://wine.aaa-alliance.hk>

珠寶及名錶拍賣 葡萄酒拍賣

珠寶及名錶拍賣

下午2時30分 星期日 2013年1月20日

葡萄酒拍賣

下午4時正 星期日 2013年1月20日

珠寶及名錶預展

2013年1月19日 星期六 早上10時正至晚上8時正

2013年1月20日 星期日 早上10時正至下午2時正

拍賣地點

萬麗海景酒店
香港灣仔港灣道1號閣樓

拍賣圖錄

HK\$200

訂閱

+852-2824-8374

wine@aaa-alliance.hk

董事總經理及行政總裁

倉田陽一郎

董事總經理

今福英治郎

董事及財政總監

入來院雄介

市場總監

田邊真吾

營運總監

張運卿

拍賣部

劉芷敏

電郵

A|A|A|A

info@aaa-alliance.net

<http://www.aaa-alliance.hk>

<http://wine.aaa-alliance.hk>

A|A|A|A|A
Asia Art Auction Alliance

U|A
United Asian Auctioneers

2/E, Shui On Centre, 6-8 Harbour Road, Wanchai, Hong Kong
Telephone +852-2824-8374 Fax +852-2824-8210 info@aaa-alliance.net
www.aaa-alliance.net http://www.aaa-alliance.hk